

LONG Engineering Ltd. (former Shining Harbour Construction), is established by the construction professionals. The management team is formed among the professional engineers, surveyors, builders, experienced managers and contractual specialists. The first project participation to the industry was since 2007 while the WSD waterworks project in Sai Kung (24/WSD/06) was sub-letted. At the end of the same year, the management team leaded the company to participate in a hotel construction project in Lantau and the company started a certain scope of building maintenance works in 2008.

In 2009, the company involved a fiber-reinforced plastic (FRP) with the scopes including design, supply and build project in Tai Po (DSD project DC/2007/11) and worked for the design and build, private site formation project in Yuen Long in 2010. Since 2011, the team was invited to support the patent materials (including waterproofing materials and etc.) in the design-build-operate projects and the involvement of the plumber and drainage system works for a private project have been carried out in 2012.

Since 2013, LONG Engineering Ltd. has been registered as a limited company, and has become a registered subcontractor in Construction Industry Council since 2014. Recently, LONG Engineering Ltd. has awarded the Certificate of Registration of Registered Minor Works Contractor (Company) and majorly focuses on the government, MTR and private works of trenchless, road & drainage, pipeline & ducting, FRP, waterproofing and LED decoration etc.

Our projects have been accomplished successfully in the manner of timely completion and within budget as clearly communicated with and promised to our clients and business partners. We focus the long term partnering relationships with our strategic partners

COMMITTED & RELIABLE

We believe that ...

EFFICIENT & EFFECTIVE

The qualified standard of the works should be delivered according to the contract requirements with reasonable time and resources managed by our professional knowledge and valuable experience

FLEXIBLE & NEGOTIABLE

We are willing to listen the needs of our clients and business partners. It is our mission to propose economic and innovative ideas and constructive alternatives for the completion of projects. We are confident to overcome any challenging project assigned by our clients

Waterworks

LONG is experienced in waterworks construction, we offers a total solution for waterworks including the site supervision, project planning & management and implementation. We are also the problem shooter to provide solution for night work, congested underground utilities and temporary traffic arrangement, i.e. cut & lift, noise enclosure, hand dig tunnel, online replacement etc.



Temporary Traffic Arrangement (TTA)



Night Work



Cut & Lift



Heading Works



Expose Pipe



24 / WSD / 06



Road, Drain and Utility Undertaker

LONG is a competent contractor for the road & drain and UU construction works. We are experienced in gas mains, drainage (and sewerage) and similar UU construction and its associated works. It includes manhole, draw pit and box culvert.

Our team is also a specialist contractor for the pipejacking operation for UU construction. We offer all rounded engineering advice including temporary work design, method statement preparation and compliance monitoring and control. Our service scope offer not limiting on the engineering aspect, we also offer service of management such as negotiation with authorities and alternative design proposal.



Gas Main Laying



UU Diversion



Building

LONG is an active contractor in the building industry. We provide steel scaffolding and system formwork for building construction. Our team also participated in the temporary site office setup, fitting out service, i.e. the factory extension projects (Nin Jiom factory extension etc.).

Pump House



Nin Jiom Factory Extension



Site office Establishment



Pits Excavation



Road Construction



Pipe Jacking



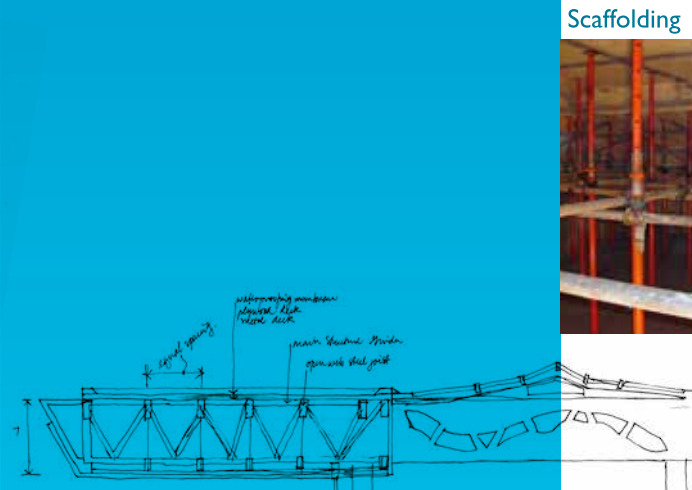
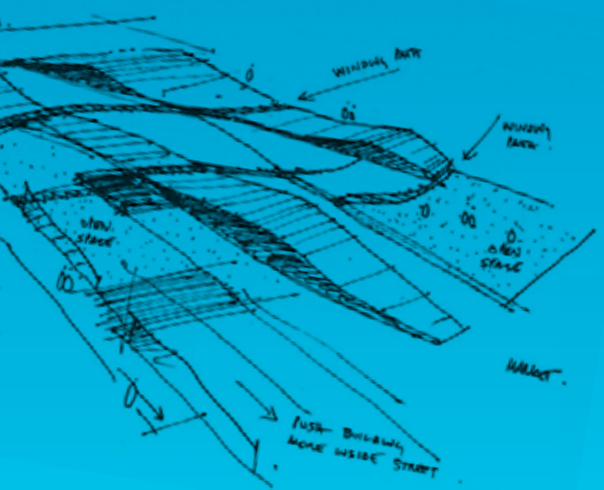
Scaffolding



Decoration



Drain Laying



Site Formation

LONG and the team participated in site formation projects in wide range of trades. We construct the ELS for the deep excavation. We also offers structural steel erection works, sheet piling works and landslip prevent measures (i.e. soil nailing and retaining wall construction).



Hoarding Work



Site Investigation



Slope Forming



Excavation Lateral Support



Landslip Prevention Work & Mitigation Work



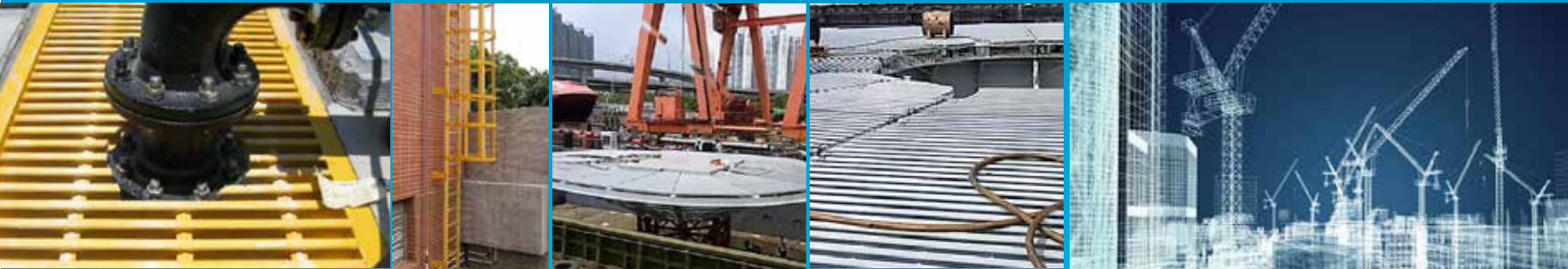
Innovation Projects

LONG explores a wide spectrum of innovation projects. The key projects are the LED decoration, ultra long service life GRP pipelines and multifunctional fixity and the Innovative irrigation system. We welcome any new design and innovative ideas in the aspect of construction. Feel free to contact us for any partnering projects.



GRP Pipework

FRP Structure



LED Decoration



Roof Garden



Why Choose LONG?



Manage Site & Traffic for Hereford Road House Development Project



3 Site Management

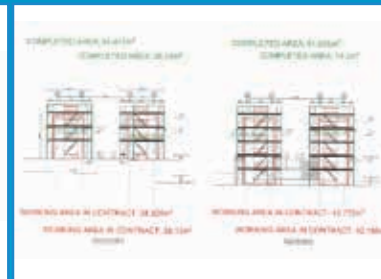
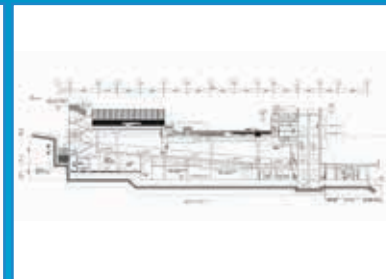
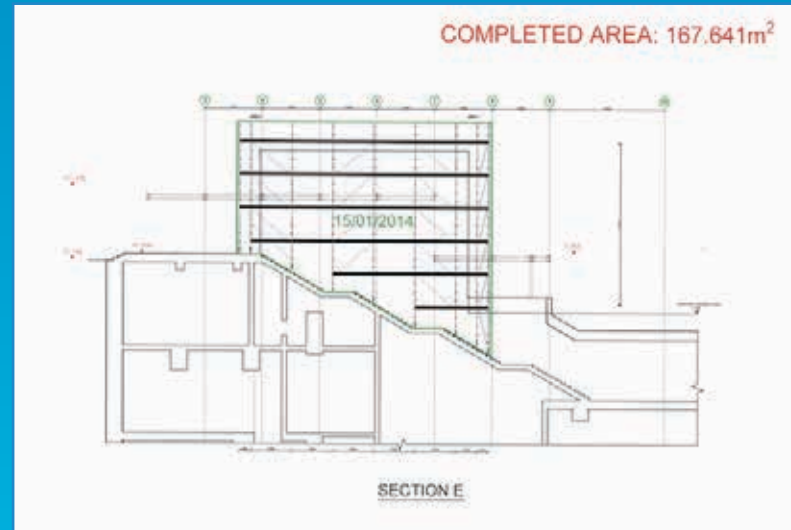
Wan Chai MTR Underground Drainage Works

4 Operation



Develop the Formwork System for Exploring Business Opportunities

1 Business Opportunity



Pipe Materials & Steel Mesh

5 Procurement Support



Act as the Project Manager for Factory Extension

2 Project Management



Supply & Install Precast Channel Mould



FRP Grating



6 Alternative Solution

Team members



Project Manager – ChiMan CHAN

BEngTech (Civil), PgC (Building), PgD (Arbitration & Construction Law), LLM CEng (Civil & Env), CBuildE, CBuilder, CConstMgr, CBdgPro, CEnv, MICE, MASCE, MCABE, MSEE, MACostE, MCIOB, MAIB, MHKICM, MHKIPM, MCIArb, MHKCAC, MCInstCES, MHKInstES, MHKIHT, MHKIOE, Accredited Adjudicator & Construction Mediator

ChiMan has educated and trained up in construction industry since 1990s, he attains bachelor degree in civil engineering and master degree in international law & commercial law in oversea universities, postgraduate qualifications in building engineering and construction law & arbitration in Hong Kong university. He owns over 15 years general and project management experiences, and he is also the chartered engineer in civil, building and environmental aspects, chartered builder, chartered construction manager, chartered building professional and chartered environmentalist. ChiMan involved to the major projects in Hong Kong including:

- HongKong-Zhuhai-Macao Bridge • Central Wanchai By-pass • MTR KTE Whampoa Station
- WSD Watermain Rehabilitation & Replacement Projects • DSD Drainage Enhancement and Pipe Jacking Projects
- HyD Western Corridor in Tuen Mun • KCRC Lok Ma Chau Spur Line

He is the founder of LONG Engineering and leads the team to overcome every challenge for success and is competent in meeting the expectation of the clients.



Assistant Compliance Manager – Anthony CHEUNG

PgD (Arbitration & Construction Law), BEngTech (Civil), ProfCert (Environmental) MCIArb, MHKIPM, MHKIPE

Anthony is an energetic manager in the construction industry, he attains bachelor degree in civil engineering and postgraduate diploma in construction law & arbitration in Hong Kong university. He owns professional arbitration, project management and programme planning qualifications. Before he joined LONG Engineering, he was the quality auditor in the head quarter for an international contractor and engaged in the key management for the pipe jacking team in a main local contractor company. His projects participation includes:

- MTR XRL Tunnelling • MTR SCL Platform Improvement • DSD Tuen Mun Drainage System Enhancement • Airport Midfield Concourse Works • WSD Watermain Rehabilitation & Replacement in Hong Kong Island & N.T. • CEDD Yeung Uk Road Widening in Tsuen Wan
- CEDD Shatin New Town Development • HyD Tuen Mun Chek Lap Kok Link Southern Connection Viaduct Section

He equips the environmental and quality assurance skills for ensuring the company and project standards and delivering high quality products for clients.



Assistant Procurement Manager – Janice MAK

Dip (Administration & Computing), ProfCert (Quantity Surveying), Cert (Engineering Drafting), Cert (Corporate Communication), MHKCAC, AMHKIPM, AMHKIPE

Janice is a young manager for the field of procurement and quantity surveying, she attains certificates in administration & computing, quantity surveying, engineering drafting and corporate communication. She concerned the professional development in alternative dispute resolution, project management and progress monitoring. Before she has been promoted to become a manager, she was the quantity surveyor for LONG Engineering. She was also the company secretary in a contractor company before she has joined LONG Engineering. Her projects participation includes:

- WSD Term Contracts in Kowloon, Hong Kong Island & Lantau Island • WSD Watermain Rehabilitation & Replacement in Tseun Wan • DSD Tuen Mun Drainage System Enhancement • HyD San Tin Roundabout & Castle Peak Road Widening • Disneyland Infrastructure Establishment • Private Development in Clean Water Bay Road for Resident Building

She equips the procurement and sub-letting skills for ensuring the company and project execution and providing clients with compliant deliverables.



Safety Officer – KK LAI

Dip (Safety Management), Cert (Environmental Supervision), RSO, AMHKIPE

KK is a registered safety officer, he attains diploma in safety management and certificate in environmental supervision. He concerned the professional development in project planning. He was the safety officer in a mega local contractor company before he joined LONG Engineering. His projects participation includes:

- DSD Tuen Mun Drainage System Enhancement • MTR SCL Tunnelling Works

He equips the safety management skills for ensuring the safety environment for the company and projects to comply with the regulation requirements.



Senior Engineer – Dennis FAN

LLM, BEng (Civil), ProfCert (Environmental), Cert (Construction Planning & Control) MHKIE, MHKIPM, MHKIPE

Dennis is a mature engineer in the construction industry, he attains certificates in environmental and construction planning & control, bachelor degree in civil engineering and law master. He owns professional engineer, project management and programme planning qualifications. Before he joined LONG engineering, he was the key project member in a resident site supervision team of consultant and the representative of the planning team in a MTR SCL project. His projects participation includes:

- Private Building Development in Tseung Kwan O • MTR SCL Platform Improvement • DSD Tuen Mun Drainage System Enhancement
- CEDD Pre-tendering Designing Works for Liantang Development • WSD Watermain Rehabilitation & Replacement in Hong Kong Island

He equips the technical and practice skills for resolving the project & site problems and proposing the flexible and optimum solutions for client's consideration.



Site Engineer – Alex NG

H.Dip (Civil), Dip (Civil), Cert (Contract Administration), Cert (Safety & Environmental Supervision), Cert (Cable Detection), AMHKIPM, AMHKIPE

Alex is an experienced engineer for works execution and site coordination, he attains higher diploma and diploma in civil engineering, certificates in contract administration, safety & environmental supervision and underground utilities surveying. He concerned the professional development in project management and progress monitoring. He was an engineer in a contractor company before he has joined LONG Engineering. His projects participation includes:

- HongKong-Zhuhai-Macao Bridge • HyD Term Contracts in Hong Kong Island • WSD Watermain Rehabilitation & Replacement in Kwai Tsing
- CEDD Site Formation Works in White Head • Private Development in White Head for Resident Building

He equips the effective communication skill for ensuring the project proceeding and delivering the progress according to the works programme for clients.



Design Engineer – William Lee

BEng (Civil), MHKIPE

William is a competent young engineer in the construction industry, he attains bachelor degree in civil engineering and owns professional planning qualifications. Before he joined LONG engineering, he was the project team members for HongKong-Zhuhai-Macao Bridge project. His projects participation includes:

- HongKong-Zhuhai-Macao Bridge • Temporary Works Design for TuenMun-ChekLapKok Link Sub-sea Tunnel • Alternative Design for Drainage System • Feasibility Study for Columbarium Developments & Municipal Services • Consultation for Government Development Policy

His technical skill is sound and is responsible for the engineering proposal of both construction method and permanent as well as temporary design. His experience covered the fields of site formation, instrumentation, drainage and RC/Steel structures.



Planning Engineer – Joe WONG

BEng (Civil), MHKIPE

Joe is an all-round young engineer in the construction industry, he attains bachelor degree in civil engineering and owns professional planning qualifications. Before he joined LONG engineering, he was the project participator for HongKong-Zhuhai-Macao Bridge project. His projects participation includes:

- HongKong-Zhuhai-Macao Bridge • Planning & Design for Government Civil Engineering Project • Alternative Structural Design Works in Kai Tak

He owns the experience in project coordination with the authorities, clients & the sub-contractors. He worked for the project management team in a world-wide civil engineering consultant, he well-managed & supervised numerous civil engineering projects at planning stage.



Site Agent – Sam CHEUNG

Sam is an experienced site agent in the industry. Before he joined LONG engineering, he is the key site management of the mega civil engineering projects in CEDD, DSD and MTR. His projects participation includes:

- DSD Tuen Mun Drainage System Enhancement • MTR SCL Tunnelling Works in Kowloon • MTR XRL TBM in N.T. • CEDD Central Wanchai By-pass • HKE Stations Infrastructure Development

Also, he has involved to the planning coordination for the projects, he is the competent participator to coordinate all site aspects. Sam has been selected as one of the best project staff in a construction company in 2013.